

21 Sue Pl, Mount Colah, NSW 2079

Guide \$1,250,000 to \$1,300,000

House 4 2 2



HIDDEN GEM

This stunning home situated on 2099 sqm is designed to meet the needs of today's modern family and offers style and practical living.

Greeted by a sundrenched entry foyer the home welcomes you into a beautifully presented formal lounge and dining room abundant with natural light and complimented by richly polished timber floors and quality plantation shutters.

The gourmet Caesar stone kitchen features stainless steel appliances and adjoins a family room that flows onto a spacious covered entertaining area that overlooks nature's wonderland that allows you to enjoy its tranquil ambience.

With landscaped gardens and manicured lawns, kid's cubby house and a secluded cabana that overlooks the valley, is the perfect place to sit, relax and enjoy your home.

Its many features include:- separate guest facilities, ceiling fans, split system air conditioning, a well appointed laundry, double garage with auto remote access and rainwater tanks.

For the astute buyer this home will meet all your expectations.

Open for Inspection

By Appointment.

Property Features

- Cul de sac location
- Modern Stylish Home
- Timber flooring
- Huge Back yard
- Quality fixtures and fittings

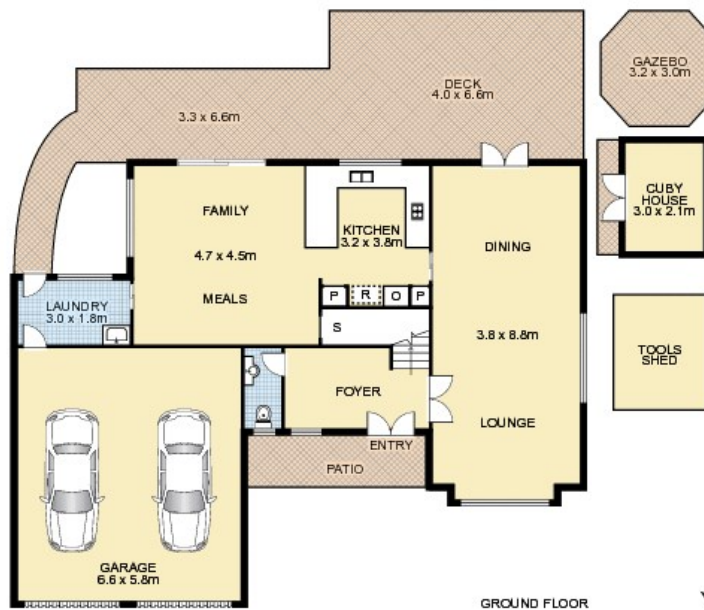
Listed By



Sue Edwards
Phone: (02) 9987 2644



Floorplan



21 Sue Place, MOUNT COLAH



This floor plan is intended as a guide only. Layout dimensions are approximate only. No representations or warranties of any nature whatsoever are given or intended. Any person using this information should rely on their own enquiries. Floor Plans by SURROUNDPIX.